

Court Mount Caravan Site

I don't know a lot about the Court Mount Caravan Park, apart from the few facts below.

The original site was called South End Farm and the rear of the house on the site had some medieval features in it. The rest of the house is dated late 18th century.



1926

The farm closed in 1928 and became a tea garden and guest house. By the time I moved here in 1961 it had become Court Mount Hotel, with a caravan Holiday complex around it.

1928



The house later became a club and restaurant and the camp site became a static mobile home site.

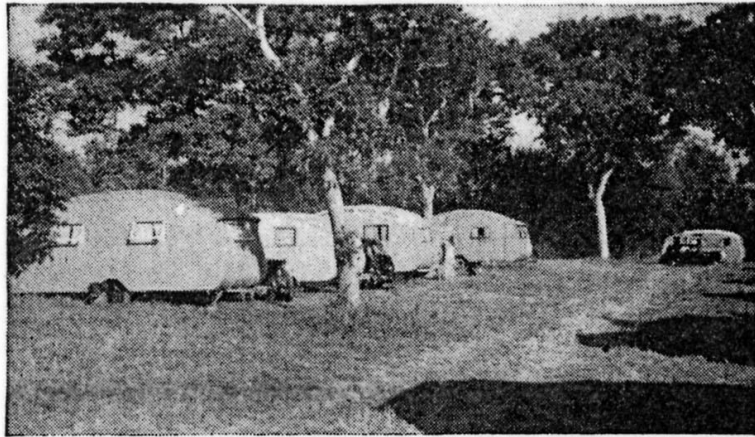
I'm not sure what it is now called - "Court Mount Mobile Home Park" perhaps? We have several photos of it in its pre caravan days and also an advert from the 1950s when it was a genuine caravan site.

1950s



A CORNER
OF "COURT MOUNT"

*The finest
site on the
Kent coast*



Here is one of the most delightful Caravan Sites you will ever find—ideally situated on the Kent Coast within easy reach of the popular seaside resorts. The absence of petrol need not spoil your holidays for the London Caravan Company will be pleased to arrange the towing of your Caravan from any spot, and your holiday

home can be in constant use. Birchington is served by a frequent train service, and buses pass the site. Excellent shopping—modern sanitation and mains water. We have a limited number of well-equipped caravans for hire on site and for sale, but early application is advisable as the popularity of Court Mount is growing fast!



London Caravan Co. Ltd.

COURT MOUNT · CANTERBURY ROAD · BIRCHINGTON



LC 15