

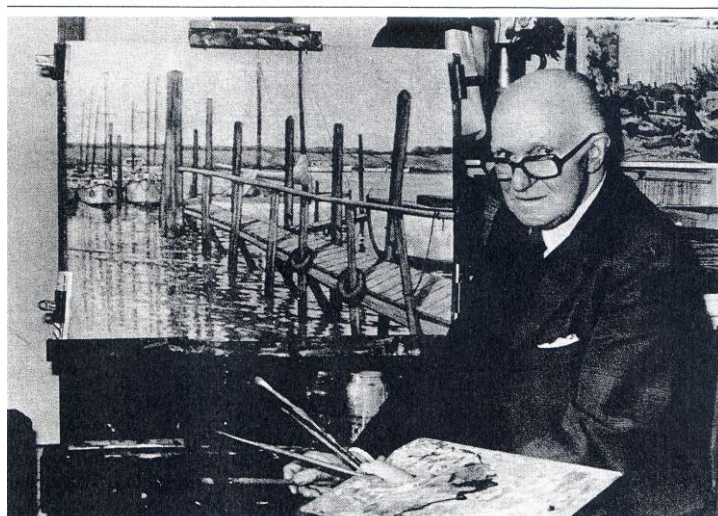
Artist David Burley Artistry combined with commercial sense

After spring shows at Deal and in the Medway towns, Thanet artist David Burley is exhibiting more than 50 pictures – mainly East Kent landscapes – in the galleries of Margate Central Library from July 9 to 21. David, the rare combination of an artist with commercial sense, is one of those fortunate painters whose pictures seem to have a large sprinkling of red “sold” dots even at the previews. His works are now in the possession of both local and county council collections as well as of proud private owners.

A member of East Kent Arts Society and also of the Society of Industrial Artists, his work has been exhibited at the Royal Academy, the Royal Institute of Painters and the Britain in Watercolour Exhibition. He can also safely claim that his work has been seen by millions because, for many years, he was a staff artist with the Southern Railway and then a freelance for British Rail. His distinctive posters of coast and country pleased the eye of countless weary travellers.

The sound draughtsmanship which is the basis of David’s work was acquired at London’s Goldsmith’s College and David, with his wife Lorna, a talented musician, lived for many years in Blackheath before moving to Thanet after the war. As a teacher he has won high reputation for his work at Thanet School of Art and at adult education establishments. For more than 30 years he has been a popular tutor on Galleon painting holidays, and has taken parties all over Europe. A further interest of David’s is the designing and building of stage sets. These larger creations have backed several stage shows both at Ramsgate’s Granville Theatre and at Margate Winter Gardens.

18 KENT LIFE JULY 1984



Artist David Burley