

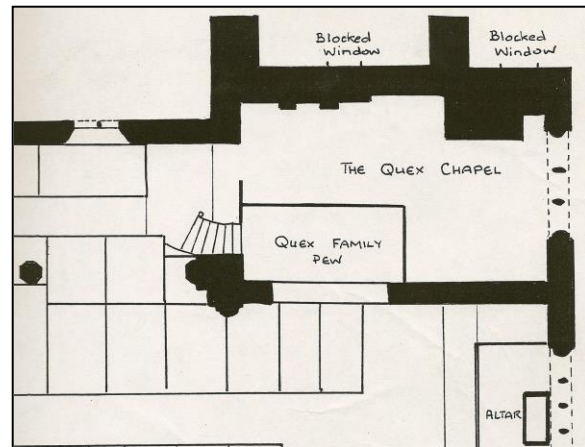
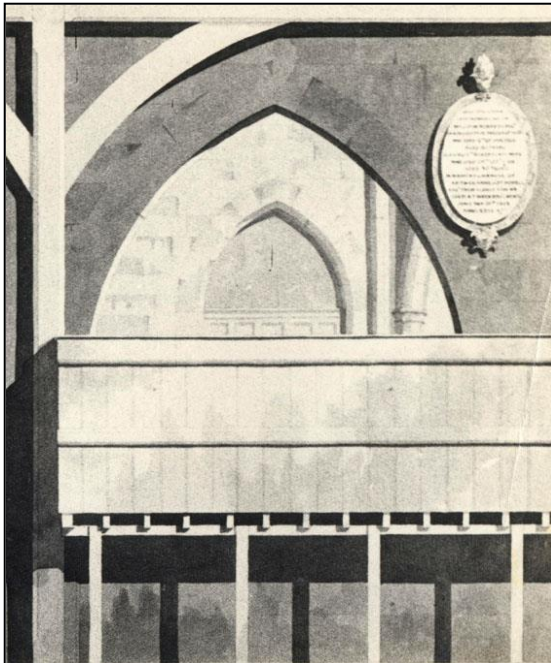
CRISPE CHARITY STORY

QUEX CHAPEL

The last clause of the will, covering the care of the **Quex Chapel**, often brings a smile to visitors' faces. When they read the wording on Anna's monument, they find it includes the name of the 'char-lady' of 1708. **Ellen Window** was to make sure that the monuments in the chapel were kept clean and sparkling for the family when they visited the church - a job which is still carried out to this day by a band of dedicated volunteers from among All Saints parishioners, who use the small grant to buy dusters, cloths and polish.

In Anna's day, she and her family had to climb a small spiral staircase and seat themselves inside a large 'opera-box' type pew in the chapel, which faced towards the Chancel. This was removed in the restoration of the Church in 1863.

The chapel has seen many changes since Anna's death, but she would certainly be very satisfied that it is still kept sparkling and clean three hundred years later!



Plan showing the spiral staircase and Quex pew in Quex Chapel

The Quex Pew